

# Graphical User Interface

## Perspectives and Views

The Eclipse-based graphical user interface consists of general menu bars and tool-specific perspectives (see Figure 1). Further information can be found in the Eclipse documentation (<http://www.eclipse.org/documentation/>).

The menu bar at the top of the screen offers access to most of the functions available in the TextGridLab (see Figure 2). The tool bar below gives access to the most frequently used perspectives and components, plus some tool-specific functions (see Figure 3). The terms perspective and component will be explained below. The perspective bar to the right of the tool bar allows to switch between the tools that are currently open (see Figure 4).

The status bar at the bottom of the screen shows the TextGrid User ID of the currently logged in user in the right corner and displays several information, such as title or URI of selected TextGrid Projects or Objects (see Figure 5). In addition, the button in the left corner gives fast access to list of views customizable by the user. The term view will be explained below as well.

Context menus offer access to the most frequently used functions of the currently used tool depending on which perspective or view is open at the moment (see Figure 6).

Tools usually consist of a specific combination of components that are called perspectives in Eclipse. In general, a perspective consists of several so-called views. For instance the Project and User Management consists of the Navigator and the User Administration View by default (see Figure 7).

By right-clicking a perspective button in the perspective bar the perspective can be customized, for instance a perspective can be reset to its initial state or closed (see Figure 8).

Components with a specific functionality that are re-used in various tools are called views. A view like for instance the Navigator can only be opened if a perspective is open that will contain this view. Multiple views can be stacked on top of each other, in this cast only the topmost view is visible (see Figure 9). By clicking the title bar of a view the desired view can be brought to the foreground. For instance in the perspective of the XML Editor the Navigator, the Metadata Editor and the Unicode Character Table are arranged in this way by default.

Each view has a title bar at the top. By right-clicking the title bar you can access several default options the view provides (see Figure 10).

Perspectives can be opened in the menu bar under “*Tools*”, views under the subitem “*Show View*” (see Figure 11). A selection of the most frequently used tools can be opened via the tool bar.

© ⓘ TextGrid-Team at TU Darmstadt – Version 0.9, Dec. 2013.  
More tutorials and further information can be found on the TextGrid website ([www.textgrid.de](http://www.textgrid.de)).

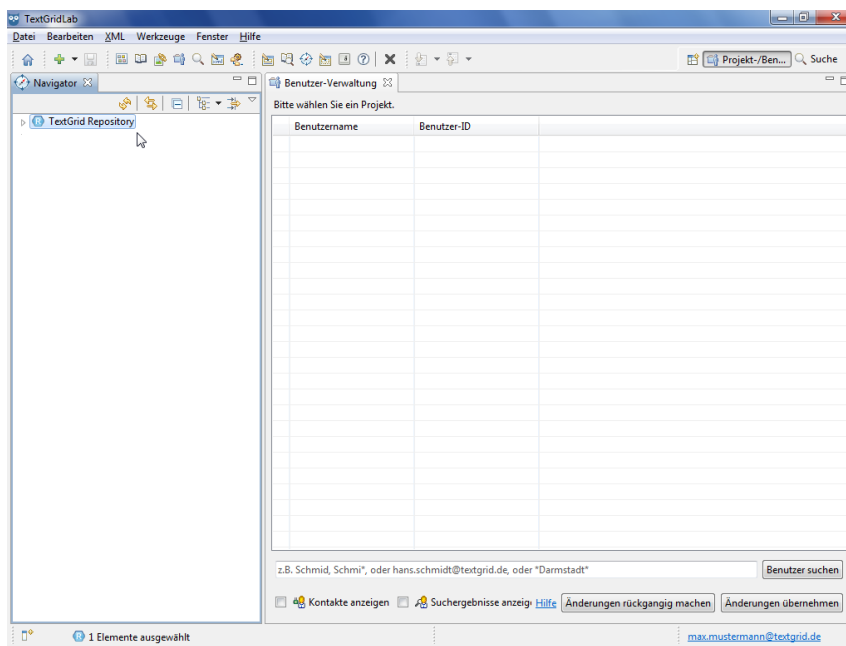


Figure 1: Graphical user interface of the TextGridLab

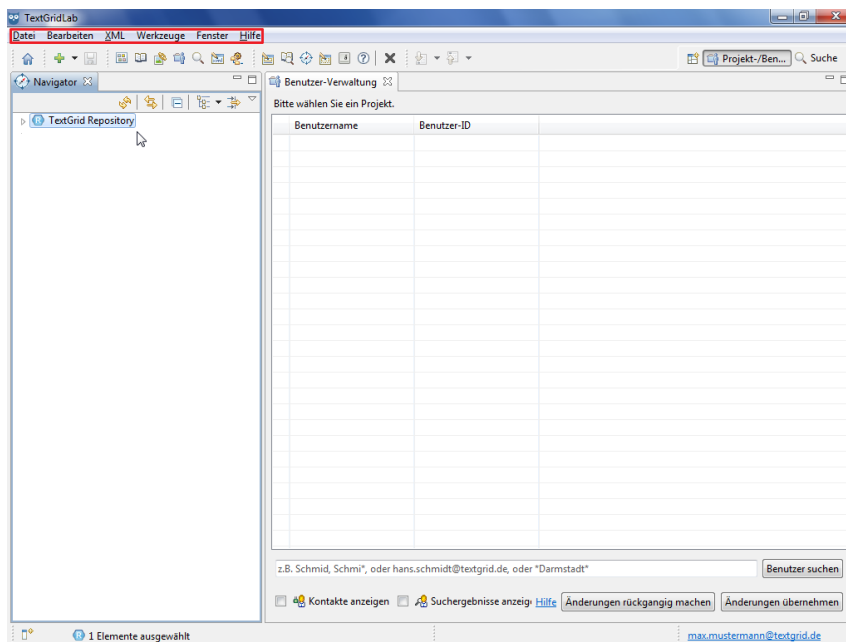


Figure 2: Menu bar

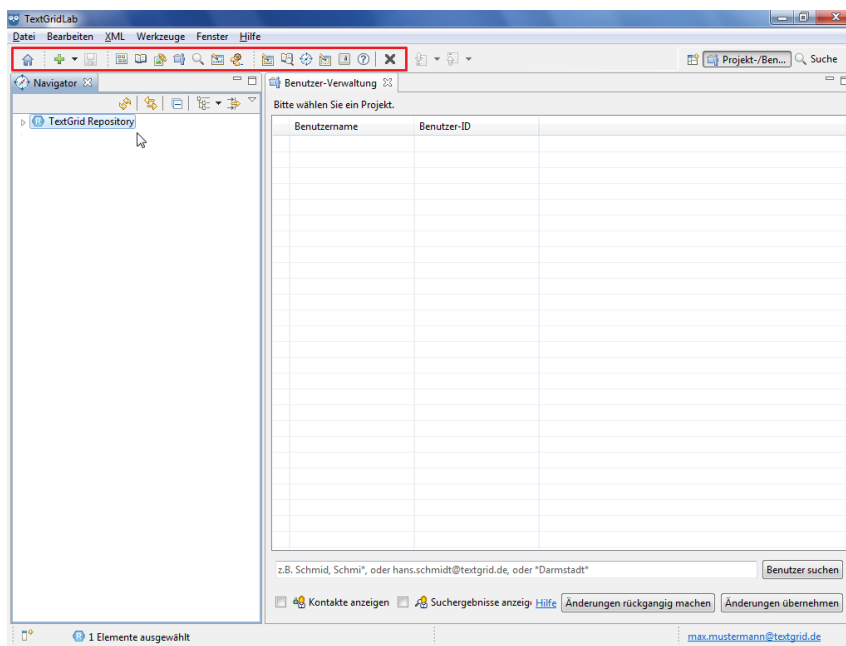


Figure 3: Tool bar

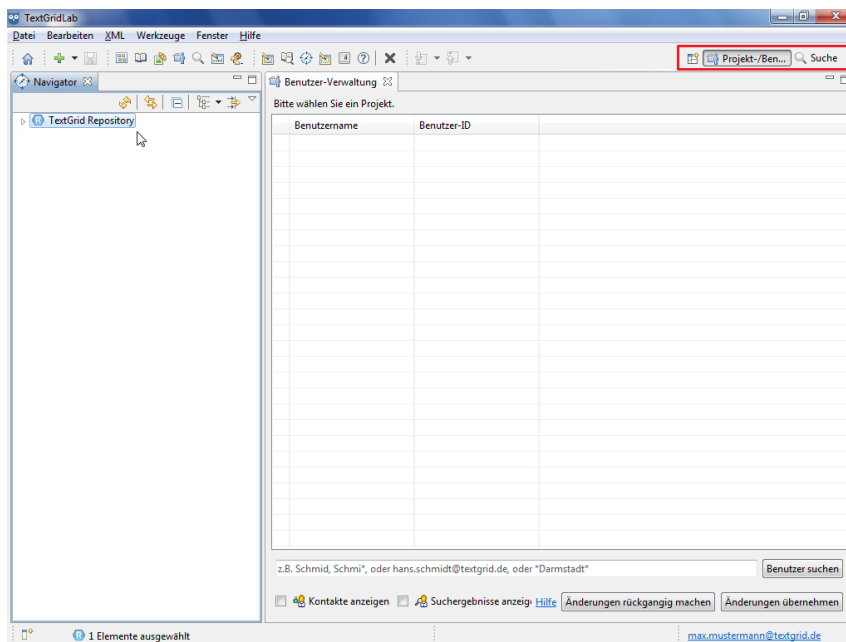


Figure 4: Perspective bar

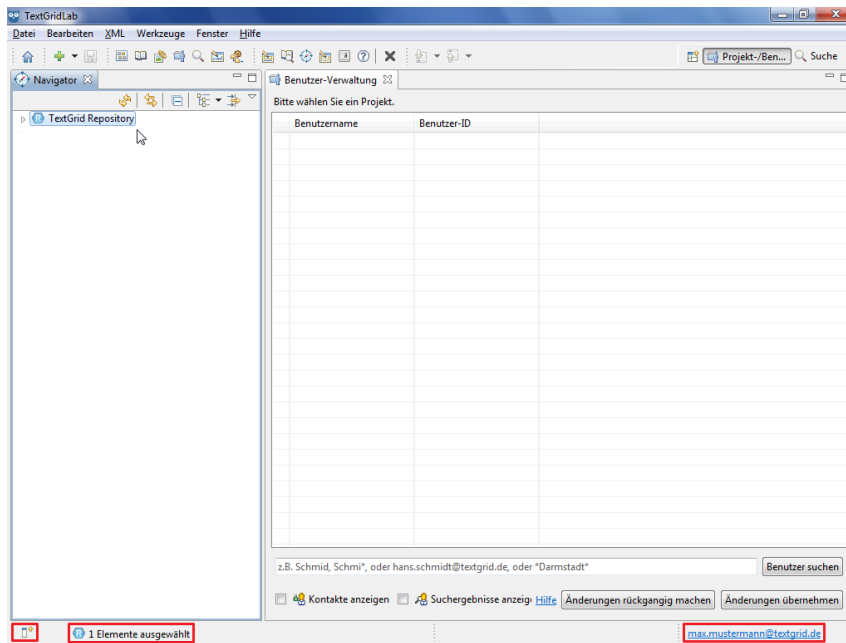


Figure 5: Status bar

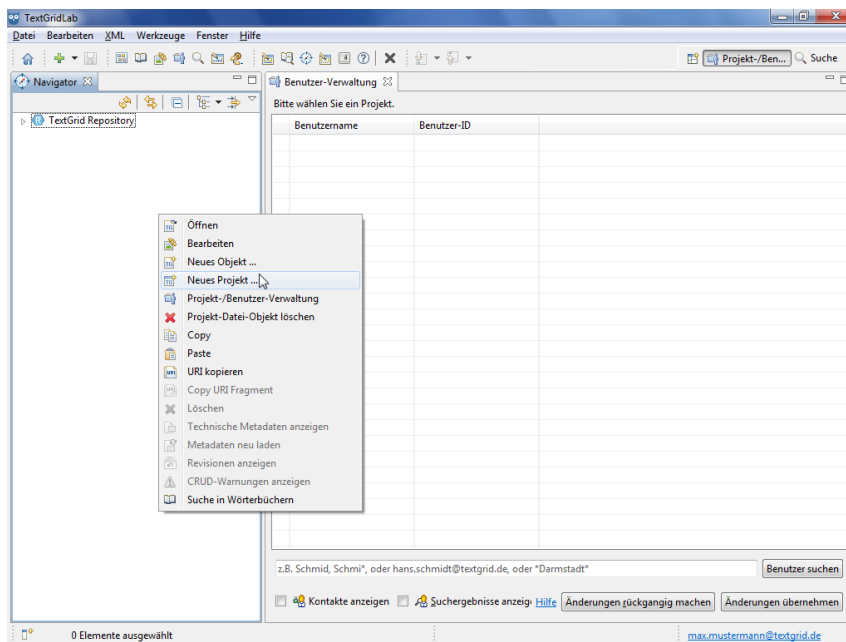


Figure 6: Context menu of the Navigator View

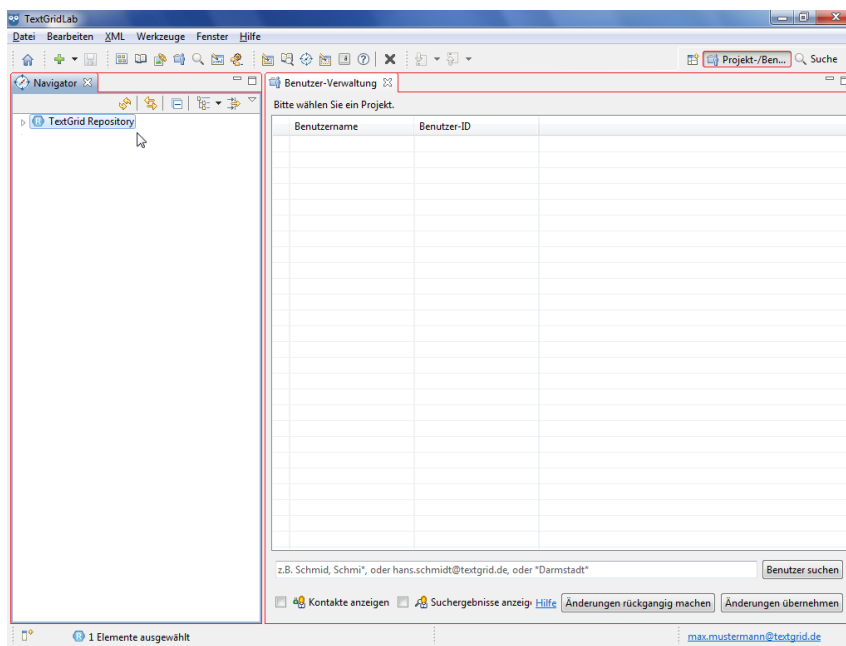


Figure 7: Two Views of the Project-/User Administration Perspective

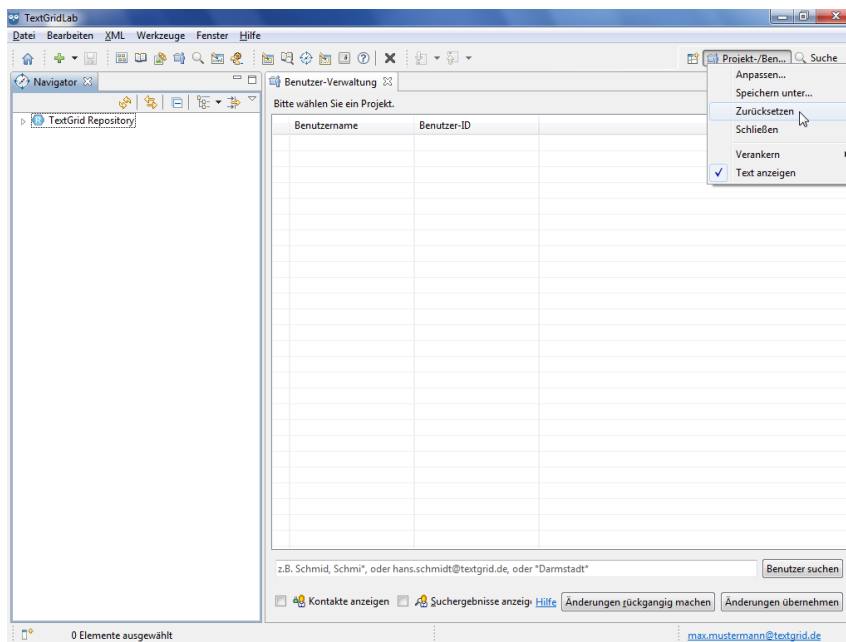


Figure 8: Menu options of the perspective bar

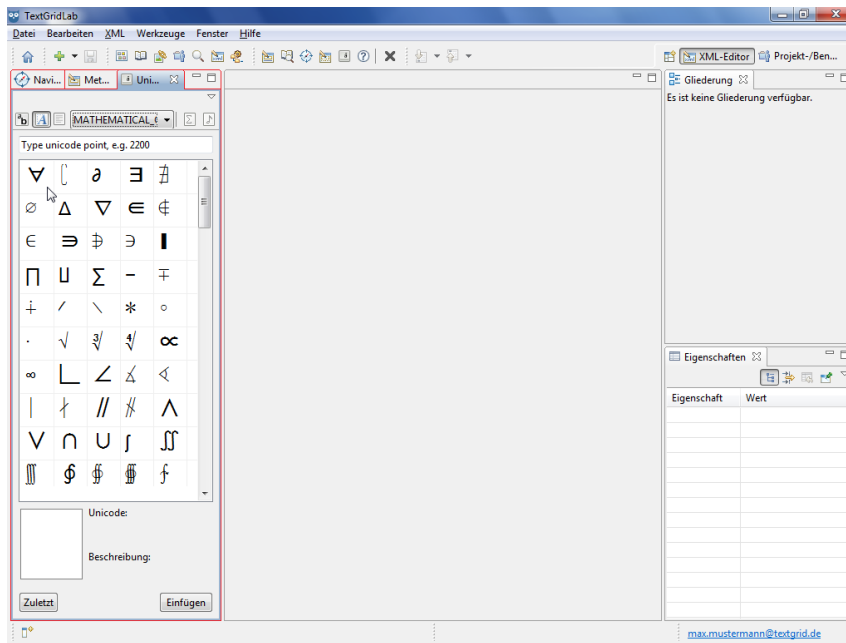


Figure 9: Three stacked views

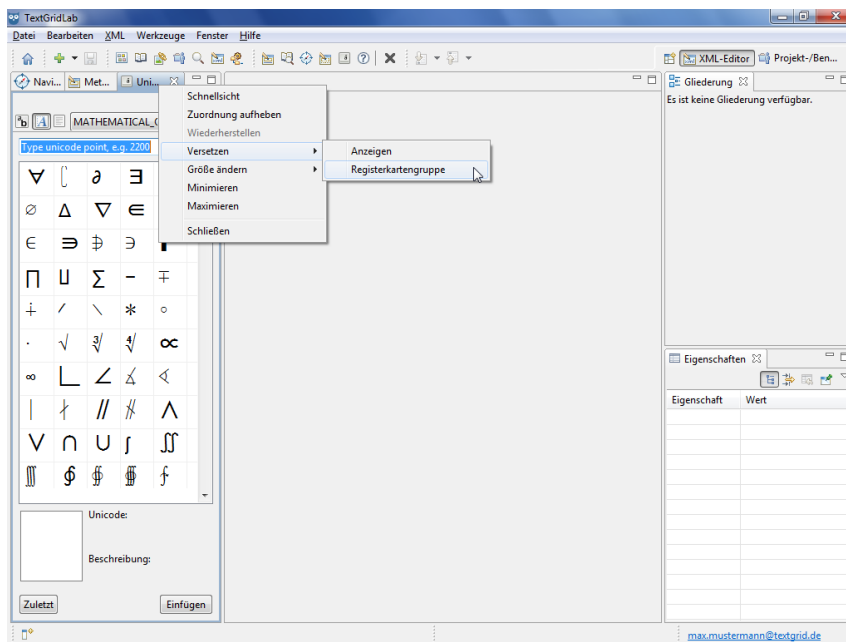


Figure 10: Menu options of the title bar of a view

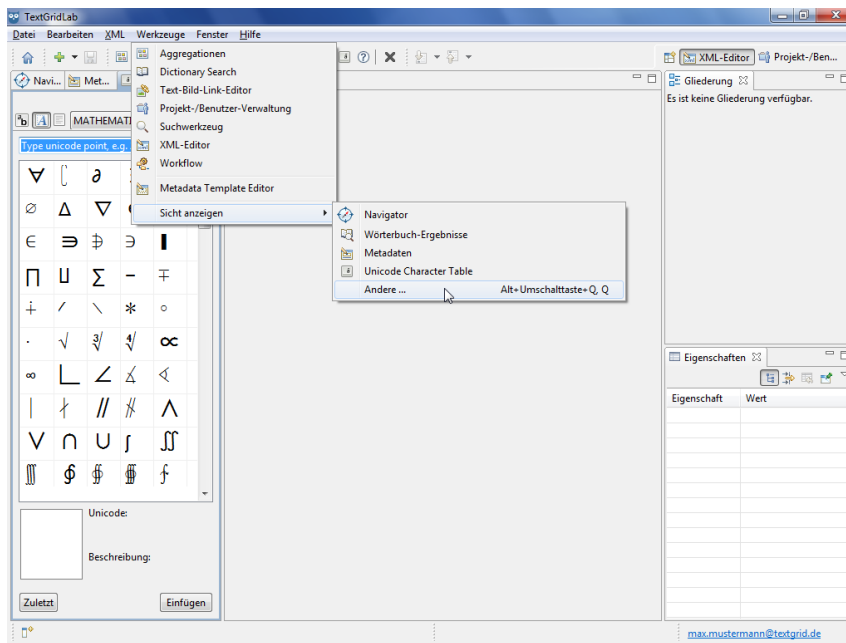


Figure 11: Perspectives and views in the menu bar